

State of Rhode Island and Providence Plantations

# Budget



## Fiscal Year 2014

Volume III – Education

Lincoln D. Chafee, Governor

# Agency

---

## Historical Preservation And Heritage Commission

---

### Agency Mission

Identify and protect historic and prehistoric sites, buildings, and districts throughout the State of Rhode Island and commemorate the history and culture of the State; promote and preserve the State's ethnic and cultural traditions; and provide a better understanding of the various ethnic cultures, which comprise the State's population.

### Agency Description

The Rhode Island Historical Preservation and Heritage Commission is the state office for historic preservation and for sponsorship of state heritage activities. It is Rhode Island's only statewide preservation program to identify and protect historic buildings, districts, and archeological sites. The commission is responsible for developing a state historical preservation plan, and for survey and planning activities which provide for in-depth studies of each city and town to identify, evaluate, and record sites, structures, districts, and objects of historical, architectural, cultural, or archeological significance to the State.

The commission sponsors and/or coordinates heritage festivals, heritage seminars, conferences, and symposia, and publishes scholarly and popular works relating to the social, political, and cultural development of the State. It also coordinates programs with other private or public groups or agencies which will meet the cultural needs of Rhode Island's citizens. The commission also organizes the Eisenhower House at Fort Adams State Park in Newport.

The commission develops and implements programs for the preservation of historic resources. Federal and state projects are reviewed by the commission to assess their effect on specific cultural resources. The commission administers programs of financial assistance, which include grants, loans, and tax credits for restoration projects. A wide range of information and technical assistance is provided to citizens who own historic properties or are interested in preserving the heritage of their neighborhood and community. The commission certifies municipal historic district zoning programs, which meet minimum standards, and annually administers funds to these "certified local governments."

### Statutory History

Title 42, Chapter 45 of the Rhode Island General Laws established the Rhode Island Historical Preservation Commission and defined the duties of the Executive Director and commission members. Executive Order Number 10, issued July 1, 1977, initially created the Heritage Commission. In 1981, the General Assembly enacted Title 42, Chapter 79 of the Rhode Island General Laws establishing the commission as a permanent state agency. In the 1994 legislative session the General Assembly repealed Title 42, Chapter 79 and amended Title 42, Chapter 45 to add Heritage Commission responsibilities creating the Rhode Island Historical Preservation and Heritage Commission.

# The Budget

## Historical Preservation And Heritage Commission Central Management

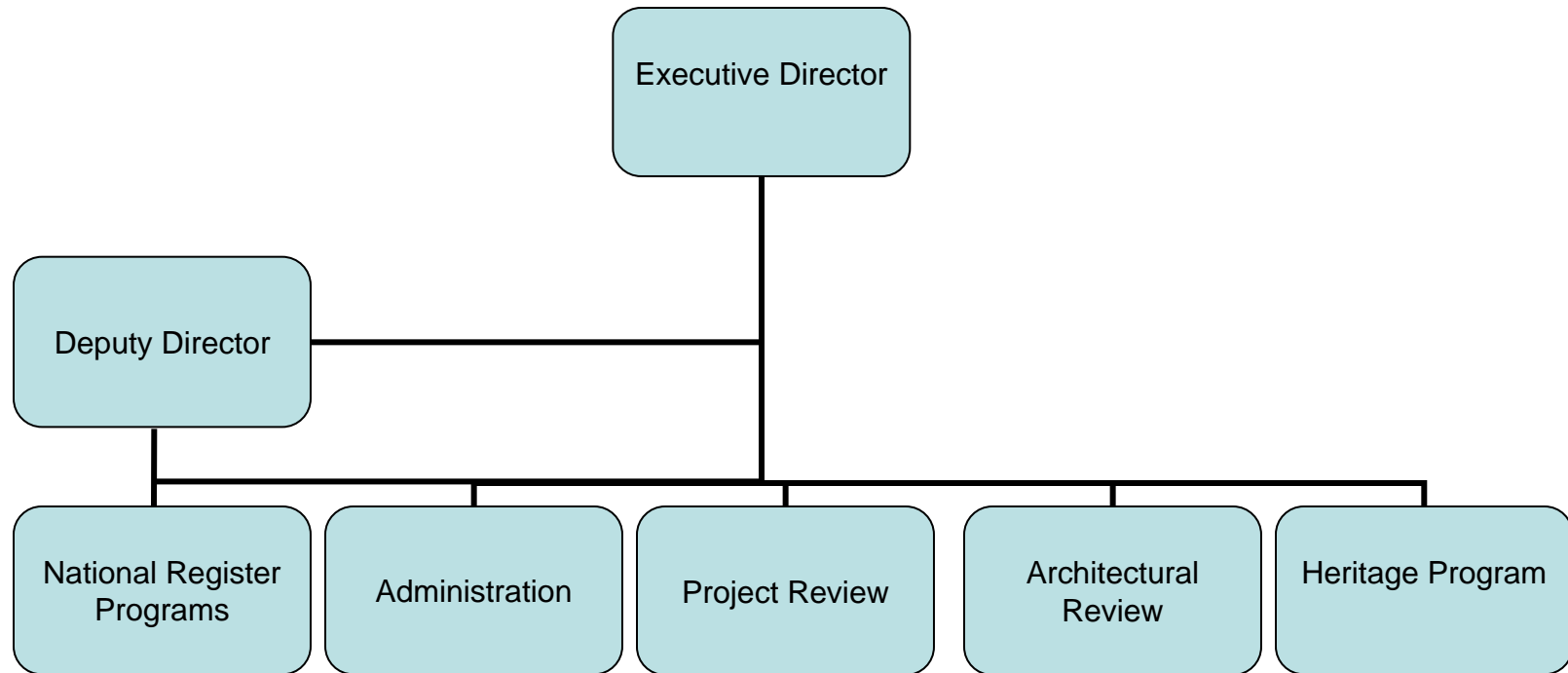
	2011 Audited	2012 Audited	2013 Enacted	2013 Revised	2014 Recommend
<b>Expenditures By Subprogram</b>					
Historical Preservation	1,652,757	1,673,535	2,184,887	2,265,410	3,217,008
Heritage Commission	530,777	234,953	544,090	260,083	264,941
<b>Total Expenditures</b>	<b>\$2,183,534</b>	<b>\$1,908,488</b>	<b>\$2,728,977</b>	<b>\$2,525,493</b>	<b>\$3,481,949</b>
<b>Expenditures By Object</b>					
Personnel	1,564,159	1,527,377	1,661,073	1,632,187	1,757,706
Operating Supplies and Expenses	100,087	161,178	92,053	106,612	110,364
Assistance and Grants	509,923	217,047	885,851	596,194	598,379
<b>Subtotal: Operating Expenditures</b>	<b>2,174,169</b>	<b>1,905,602</b>	<b>2,638,977</b>	<b>2,334,993</b>	<b>2,466,449</b>
Capital Purchases and Equipment	9,365	2,886	90,000	190,500	1,015,500
<b>Total Expenditures</b>	<b>\$2,183,534</b>	<b>\$1,908,488</b>	<b>\$2,728,977</b>	<b>\$2,525,493</b>	<b>\$3,481,949</b>
<b>Expenditures By Funds</b>					
General Revenue	1,294,878	1,253,696	1,361,801	1,265,417	1,332,510
Federal Funds	831,658	537,821	836,139	589,279	609,949
Restricted Receipts	56,998	41,971	456,037	454,191	454,491
Operating Transfers from Other Funds	-	75,000	75,000	175,000	1,000,000
Other Funds	-	-	-	41,606	84,999
<b>Total Expenditures</b>	<b>\$2,183,534</b>	<b>\$1,908,488</b>	<b>\$2,728,977</b>	<b>\$2,525,493</b>	<b>\$3,481,949</b>

# The Agency

---

## Historical Preservation and Heritage Commission

---



# Personnel

## Historical Preservation And Heritage Commission Central Management

	Grade	FY 2013		FY 2014	
		FTE	Cost	FTE	Cost
<b>Classified</b>					
SUPERVISING HISTORIC PRESERVATION	00031A	1.0	77,228	1.0	77,228
PRINCIPAL HISTORIC PRESERVATION SPECIALIST	00028A	1.0	70,100	1.0	70,100
PRINCIPAL HISTORIC PRESERVATION SPECIALIST	00028A	2.0	135,820	2.0	135,820
PRINCIPAL HISTORIC PRESERVATION SPECIALIST	00028A	1.0	67,180	1.0	67,180
SENIOR HISTORIC PRESERVATION SPECIALIST	00025A	1.0	59,502	1.0	59,502
SENIOR HISTORIC PRESERVATION SPECIALIST	00025A	2.0	116,417	2.0	116,417
PRINCIPAL HISTORIC PRESERVATION SPECIALIST	00028A	1.0	53,044	1.0	54,942
HISTORIC PRESERVATION SPECIALIST	00021A	1.0	48,838	1.0	48,838
SENIOR HISTORIC PRESERVATION SPECIALIST	00025A	3.0	146,193	3.0	149,481
HERITAGE COMMISSION AIDE	00018A	1.0	45,873	1.0	45,873
FISCAL CLERK	00014A	1.0	42,806	1.0	42,806
SENIOR WORD PROCESSING TYPIST	00312A	0.6	24,576	0.6	24,576
<b>Subtotal</b>		<b>15.6</b>	<b>\$887,577</b>	<b>15.6</b>	<b>\$892,763</b>
<b>Unclassified</b>					
EXECUTIVE DIRECTOR (RI HISTORIC PRES &	00837A	1.0	107,450	1.0	107,450
<b>Subtotal</b>		<b>1.0</b>	<b>\$107,450</b>	<b>1.0</b>	<b>\$107,450</b>
Temporary and Seasonal		-	15,612	-	15,612
Turnover		-	(40,192)	-	-
<b>Subtotal</b>		<b>-</b>	<b>(\$24,580)</b>	<b>-</b>	<b>\$15,612</b>
<b>Total Salaries</b>		<b>16.6</b>	<b>\$970,447</b>	<b>16.6</b>	<b>\$1,015,825</b>
<b>Benefits</b>					
Payroll Accrual			5,367		5,732
FICA			74,241		77,710
Retiree Health			65,713		76,388
Health Benefits			263,537		299,018
Retirement			212,202		240,552
<b>Subtotal</b>			<b>\$621,060</b>		<b>\$699,400</b>
<b>Total Salaries and Benefits</b>		<b>16.6</b>	<b>\$1,591,507</b>	<b>16.6</b>	<b>\$1,715,225</b>
<b>Cost Per FTE Position (excluding Statewide Benefit Assessment)</b>			<b>\$95,874</b>		<b>\$103,327</b>
<b>Statewide Benefit Assessment</b>			<b>\$35,805</b>		<b>\$37,506</b>
<b>Payroll Costs</b>		<b>16.6</b>	<b>\$1,627,312</b>	<b>16.6</b>	<b>\$1,752,731</b>

# Personnel

## Historical Preservation And Heritage Commission Central Management

	Grade	FY 2013		FY 2014	
		FTE	Cost	FTE	Cost
<b>Purchased Services</b>					
Clerical and Temporary Services			1,000		1,100
Other Contracts			2,100		2,100
Buildings and Ground Maintenance			1,775		1,775
<b>Subtotal</b>			<b>\$4,875</b>		<b>\$4,975</b>
<b>Total Personnel</b>		<b>16.6</b>	<b>\$1,632,187</b>	<b>16.6</b>	<b>\$1,757,706</b>
<b>Distribution By Source Of Funds</b>					
General Revenue		10.0	\$1,040,741	10.0	\$1,106,854
Federal Funds		5.6	\$517,675	5.6	\$534,613
Restricted Receipts		-	\$32,507	-	\$32,219
Other Funds		1.0	\$41,264	1.0	\$84,020
<b>Total All Funds</b>		<b>16.6</b>	<b>\$1,632,187</b>	<b>16.6</b>	<b>\$1,757,706</b>

1

*One new position funded by RI Department of Transportation that will be responsible for assisting in the development and implementation of a shared information system and streamlining the historic review process of construction sites.*

# Performance Measures

## Historical Preservation And Heritage Commission Central Management

### *National Register of Historic Places (NRHP) - Nominations*

The Rhode Island Historical Preservation & Heritage Commission (RIHPHC) documents and nominates historic structures and archaeological sites to the National Register of Historic Places. The Historic Register is the official list of properties that possess historical significance and are worthy of preservation. Properties entered on the Historic Register become eligible for the benefits of historic preservation programs managed by the RIHPHC. This measure reports on the number of properties nominated each year.

	2011	2012	2013	2014
<b>Target</b>	N/A	242	102	102
<b>Actual</b>	493	246	--	--

### *Architectural Reviews*

Professional architects at RIHPHC administer financial assistance to projects to rehabilitate historic buildings and leverage private investment. This program preserves historic buildings by adapting them for new use and helps to revitalize communities. In the ten years from 2001 to 2011, a total of \$1.7 billion was invested in rehabilitation 2,622 historic buildings. This measure reports on the number of historic buildings rehabilitated each year.

	2011	2012	2013	2014
<b>Target</b>	N/A	28	41	41
<b>Actual</b>	28	41	--	--

### *Architectural Review Dollar Value*

The figures below represent the dollar value of investment represented by RIHPHC's architectural review projects.

	2011	2012	2013	2014
<b>Target</b>	N/A	\$95,600,000	\$152,000,000	\$152,000,000
<b>Actual</b>	\$95,600,000	\$152,000,000	--	--

### *Heritage Program Assisted Event Attendance*

The RIHPHC Heritage program works with ethnic subcommittee members to document, support and celebrate the diverse cultural heritage of Rhode Island's people through publications and events. This measure reports on the number of people who participate in Heritage programs each year.

	2011	2012	2013	2014
<b>Target</b>	N/A	40,000	42,750	42,750
<b>Actual</b>	41,050	42,750	--	--